

DAMP

RISING DAMPNESS / WATERPROOFING

Rising Dampness is the capillary rise of water within a wall's masonry pores.

The degree of dampness depends upon the size of pores, wall thickness and level of the water table.

The insertion of a chemical damp proof course will help control Rising Dampness. However it is the hygroscopic salts carried to the wall surface by evaporating water which causes internal problems. These nitrate, chloride and sulphate salts absorb atmospheric moisture resulting in the breakdown of decorative finishes and plasters.



Rising Dampness.

TREATMENT

- Correct installation of a water-based damp-proof course.
- Replastering the walls using a specially blended plastering system proven to prevent salts from migrating to the surface.



National Association of Estate Agents
Headquarters, Warwick.
Basement storage after waterproofing.

Professional **Waterproofing** of basements and cellars creates additional living and working space within a building. Most areas can be made habitable, the damp area removed and the new viable space will add value to the property. The systems recommended will vary according to the type of property, its age and form of construction. Various underground conditions will also affect the approach to treatment including free water and drainage, accessibility and any vibration from traffic.

TREATMENT

- Traditional cementitious waterproofing systems.
- Resin based systems.
- Cavity drainage systems (illustrated).

stonehouse

PROPERTY CARE

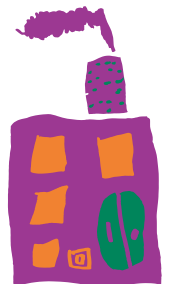
FOR MORE DETAILS

Building preservation consultants

We are a specialist advice and treatment service for the control of decay and dampness. Our technical expertise has available a full insurance - backed warranty and we insist on the most effective treatment products. These are continually reviewed to be as ecologically friendly as possible.

We are also pleased to offer

- **Condensation Control** - advice and solutions for modern day living.
- **Green Roof Systems** - a new look for flat roofs.
- **Cyclical maintenance systems** - control and management.



Telephone 01491 577560

Facsimile 01491 410168

Email info@stonehousepropertycare.co.uk

Website www.stonehousepropertycare.co.uk

Stonehouse Property Care Limited Unit 3 Empstead Works Henley-on-Thames Oxfordshire RG9 1UF